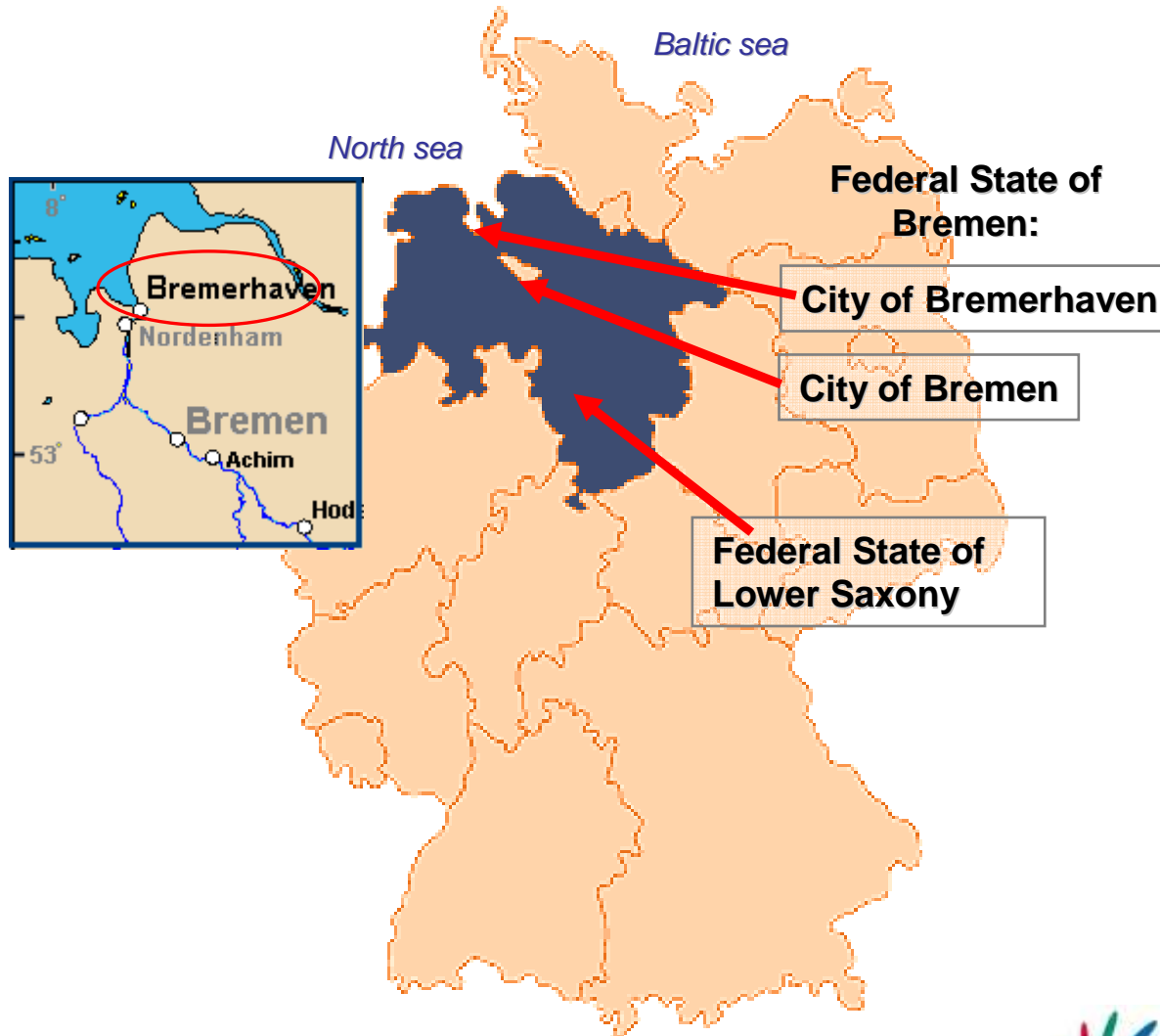


Aqua-add kick – off conference Introduction of Bremerhaven - Geestemünde

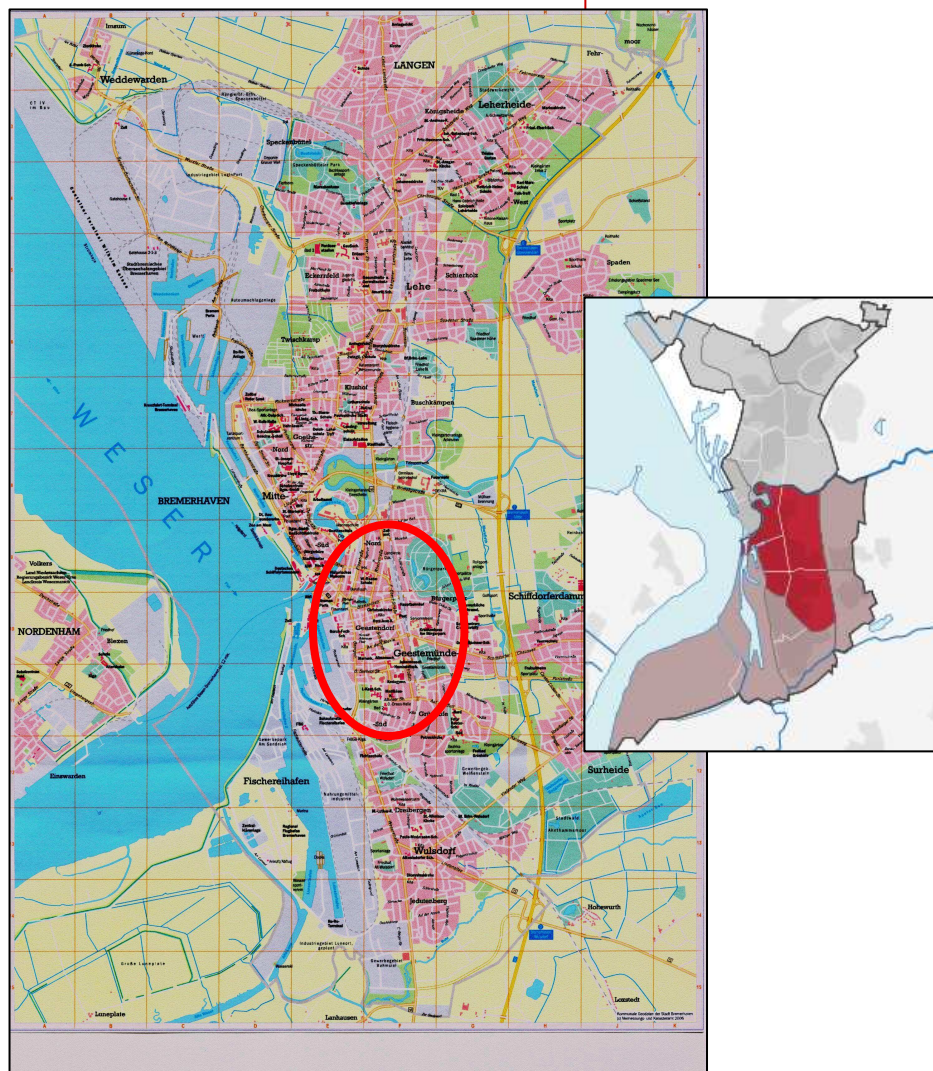




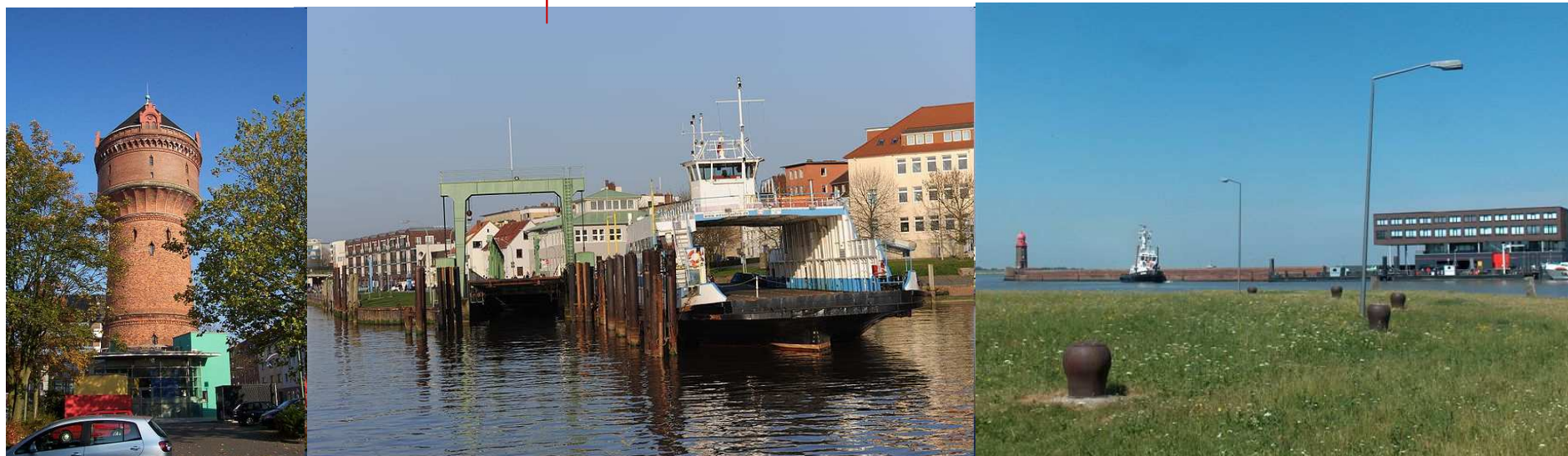
- Bremerhaven lies in the north of Germany
- A city of the free city-state of Bremen, a state of the Federal Republic of Germany.
- Largest German city at the north sea coast



- Unique situation:
The federal state of Bremen consists of two cities: **Bremen and Bremerhaven**
- 60 km distance
- Connected by the river Weser
- Surrounded by state of Lower Saxony



- Founded in 1827
- Size: 93,82 km²
- Inhabitants: 113.500 (Sept. 2011)
- Originally planned and built as 'Bremer haven' = 'port of Bremen'
- Bremerhaven today is a city in its own right (own constitution)
- The district of "Geestemünde" is located in the centre of Bremerhaven.
- It is located where the river Geeste mouths into the river Weser.



The district of **Geestemünde** needs to be **revitalised**.

The area needs a concept **using the potential of the river** in order to become more attractive, contribute to quality of life, and encourage SMEs and shop owners to stay in and/or move to the district.

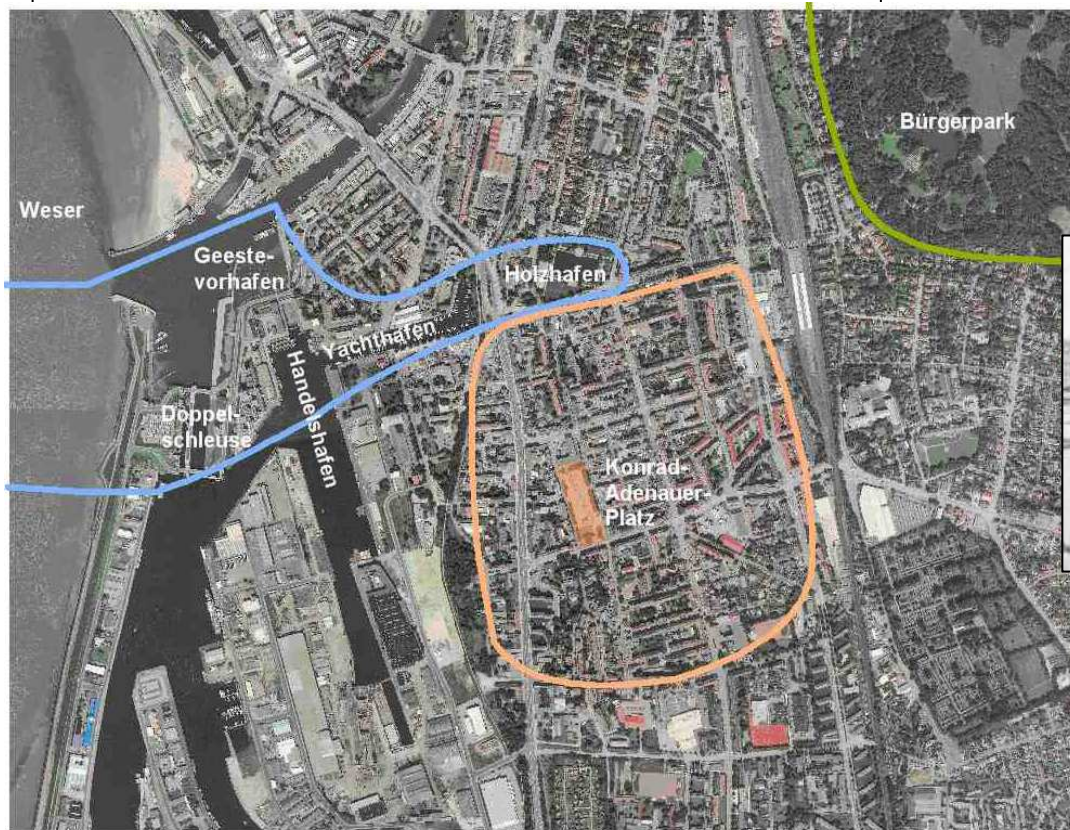
As Aqua-Add partner, we would like to initiate and support testing strategies to improve the integration of water in our spatial development processes.



- Through activities together with local stakeholders, we are planning to make significant water-places visible and accessible.
- A cross-cutting approach and the increase of local networks, business improvement districts, etc. is necessary.

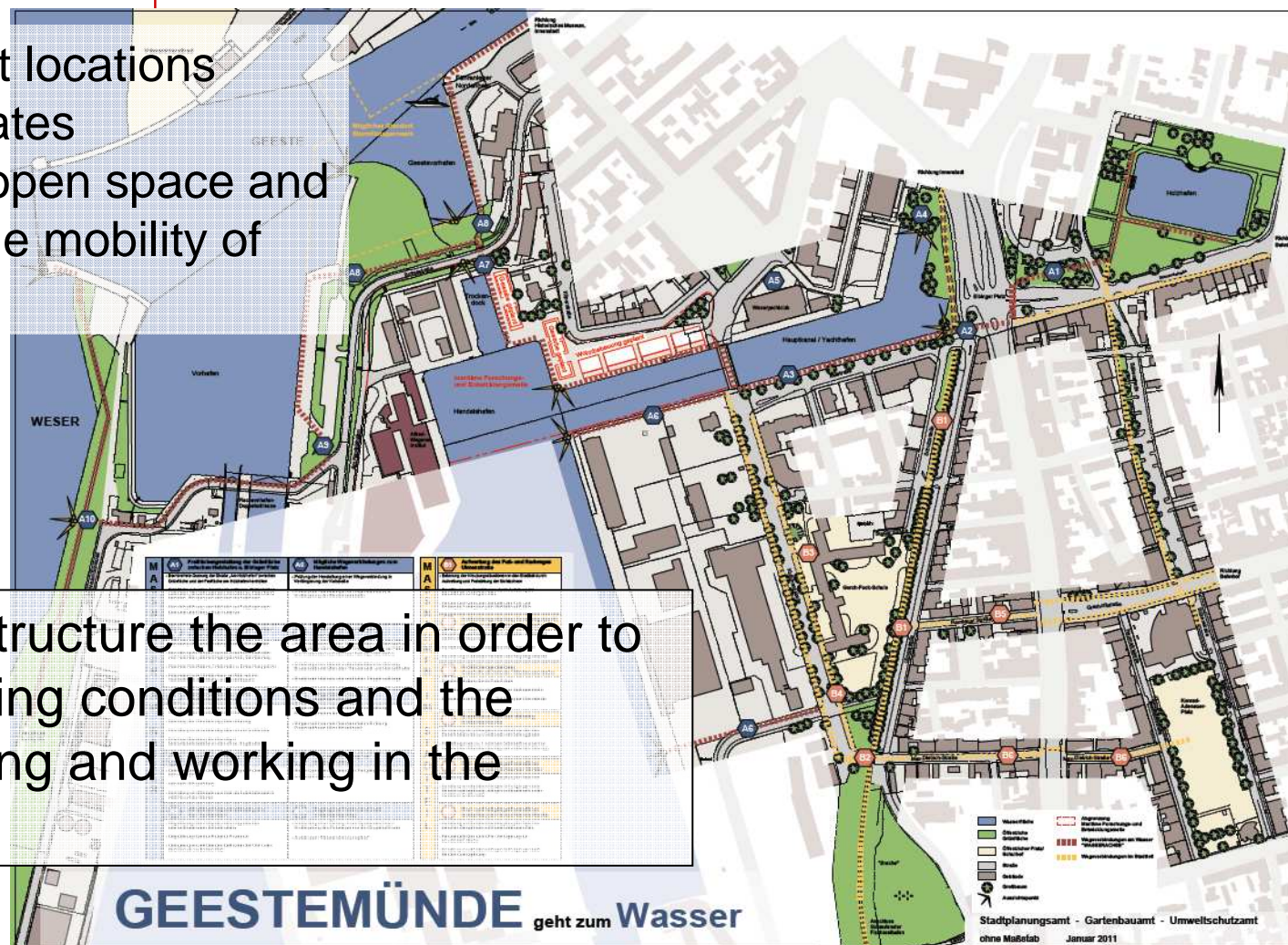


Only little share of open space in Geestemünde
Great potential through historic location at the waterfront



- abandoned port locations
- high vacancy rates
- large deficit in open space and a below-average mobility of the residents.

We seek to restructure the area in order to increase the living conditions and the quality of housing and working in the district.



The "water axis"

A "water axis" for pedestrians and cyclists shall be developed, aiming to:

- increase the accessibility of the two rivers,
- increase attractiveness of the district
- increase awareness of the proximity to water,
- raise the desire of citizens to live and work in Geestemünde.

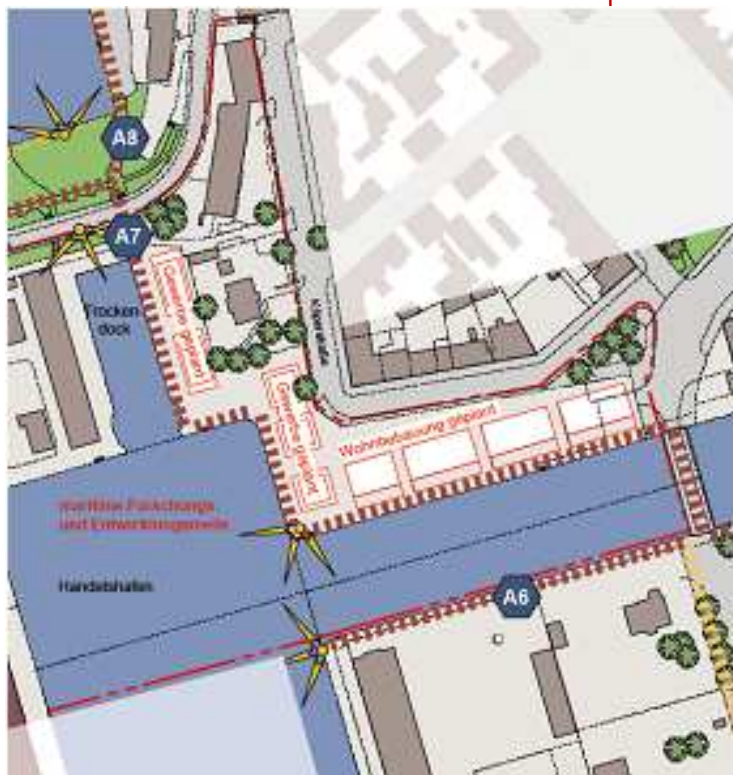




Complex crossing:
Holzhafen / green space / Elbinger Platz



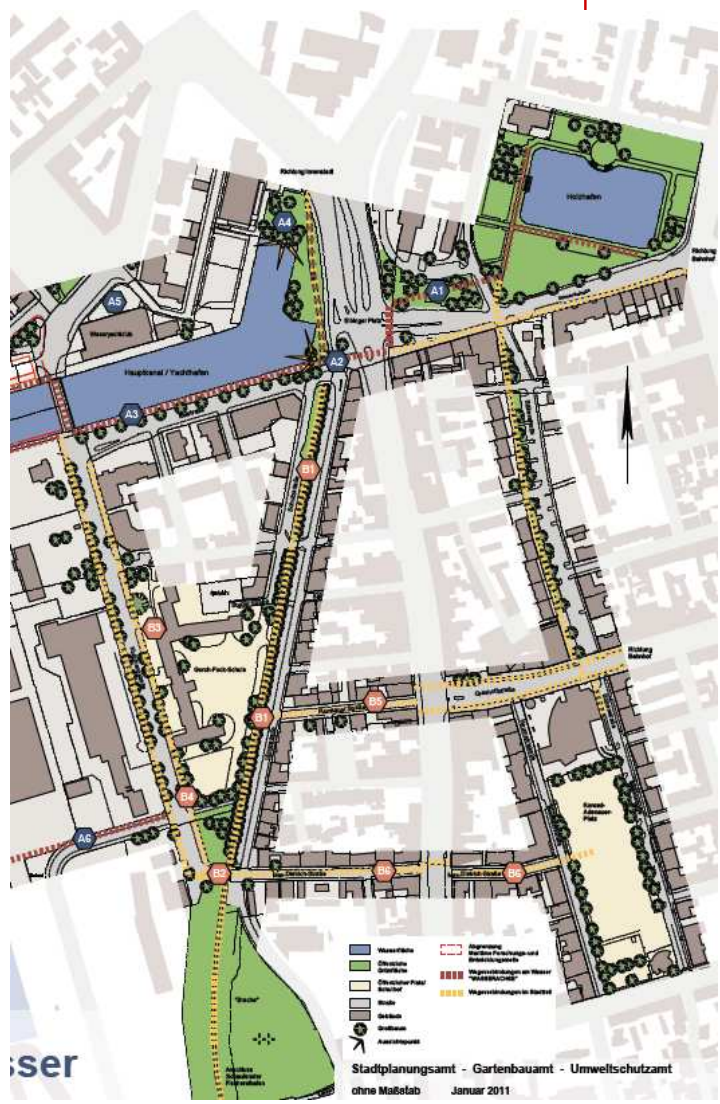
Hidden watersides: Marina and AOK-waterside



Marine Research and Development mile:
Planning and execution by the Bremerhaven
business development agency



Experience water
Creation of trails and recreational areas



How do I get to the water?

Attractive trails in the district:

- Bülkenstraße (finished)
- Achse Ulmenstraße
- Gehwege Klußmannstraße
- Ramsauer Straße
- Max-Dietrich-Straße





Thank you for your attention,

Environmental protection dept.

Theresia Lucks
Wurster Straße 49
27580 Bremerhaven
Tel. : 0471/590-2528
Fax: 0471/590-2981
Email: Theresia.Lucks@
magistrat.bremerhaven.de

Urban planning dept.

Gudrun Heckemeier
Fährstraße 20
27568 Bremerhaven
Tel.: 0471 / 590 3248
Fax: 0471 / 590 2079
E-Mail: Gudrun.Heckemeier@
magistrat.bremerhaven.de

Garden & Parks dept

Liselotte Gundermann
Eckernfeldstraße 5
27580 Bremerhaven
fon. 49 0471-590-2520
fax 49 0471-590-2660
e-mail: Liselotte
Gundermann@
magistrat.bremerhaven.de

Dept. of economic affairs

Claudia Harms
Elbinger Platz 1
D- 27570 Bremerhaven
Germany
fon: +49471 590-3396
fax: +49471 590-2800
e-mail: claudia.harms@
magistrat.bremerhaven.de